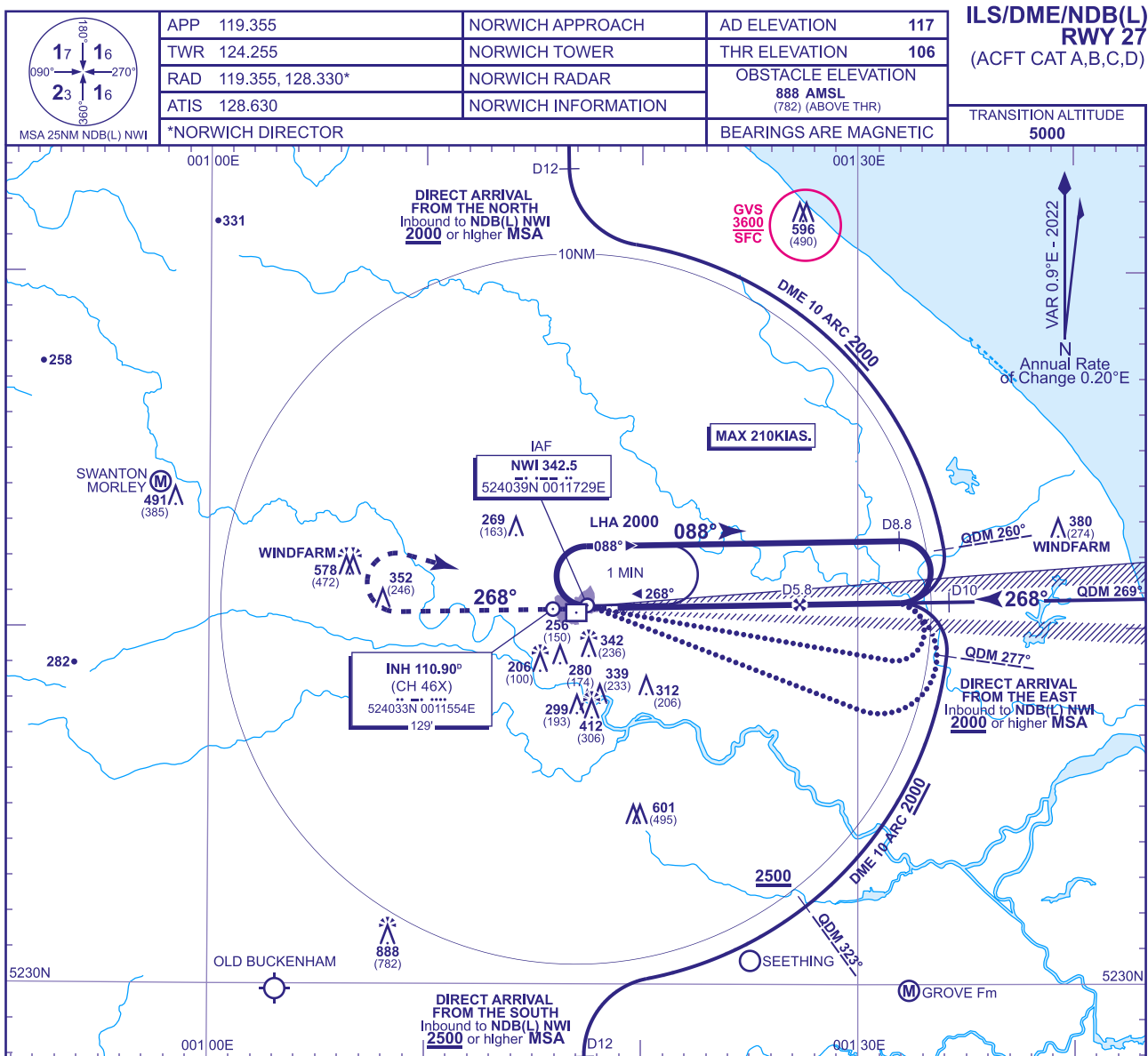
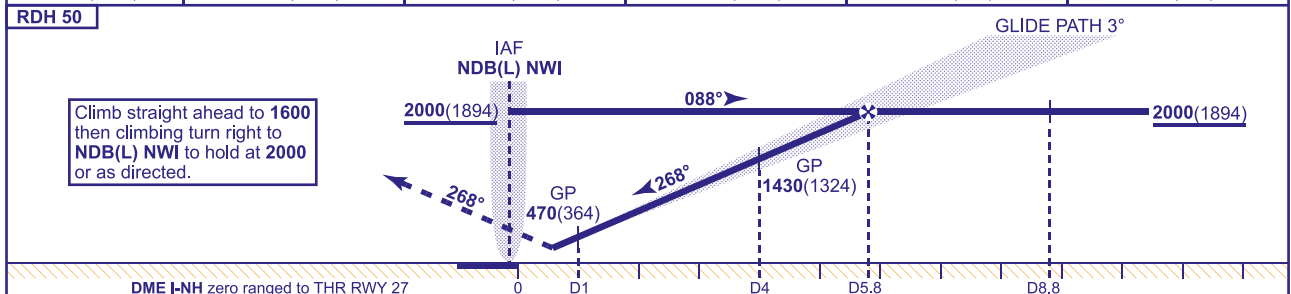


NORWICH
ILS/DME/NDB(L)
RWY 27
(ACFT CAT A,B,C,D)



RECOMMENDED PROFILE GLIDE PATH 3°, 320FT/NM					
DME I-NH	5	4	3	2	1
ALT(HGT)	1750(1644)	1430(1324)	1110(1004)	790(684)	470(364)



Aircraft Category		A	B	C	D	Rate of descent	G/S KT	160	140	120	100	80
OCA (OCH)	CAT I	242(136)	251(145)	263(157)	276(170)		FT/MIN	850	740	640	530	420
VM(C)OCA (OCH AAL)	Total Area	610(493)	640(523)	810(693)	810(693)							

ALTERNATIVE PROCEDURE
Overhead NDB(L) NWI fly outbound on QDR 100° (CAT A,B); QDR 110° (CAT C,D) maintaining **2000**(1894). At L-NH DME 8.8 turn left to intercept LOC.
When established, proceed as for main procedure.

- NOTE** 1 All inbound aircraft should contact Norwich at least 10 MIN before ETA.
2 ATC will normally require aircraft to hold not lower than **3000** or equivalent FL.
3 Direct arrivals are subject to ATC approval and not available without DME I-NH.

CHANGE (12/23): DME I-NH ELEVATION.